

Campus Development at Northumbria University

Professor George Marston

North East Emerging
Development Hotspots

June 27, 2024



**Northumbria
University**
NEWCASTLE



Northumbria
University
NEWCASTLE

Northumbria in Numbers



36,000 Students
from **138** countries
12,300 international students,
including 4600 in Newcastle
and 4400 in London



23rd in UK for Research
Power in REF 2021 rankings



400+ courses
At **2** UK campuses,
Newcastle and
London



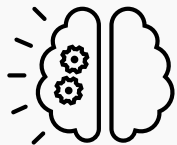
63% of UG students come
from the NE
63% of graduates who go
into employment do so in NE



£1.6bn GVA
31,650 jobs in UK
2021-22



17 global academic
partners in
10 countries



Top 5 for graduate
start-ups for 10 of the
last 13 years



37% of graduates
come from low HE
engagement areas



233,000
Northumbria alumni
worldwide



**Northumbria
University**
NEWCASTLE

Campus Investment

Almost £300 million pounds invested in our campuses since 2005

- Architecture Studios
- Computer and Information Sciences Building
- Digital Commons
- Student Central
- Sport Central

Top 10

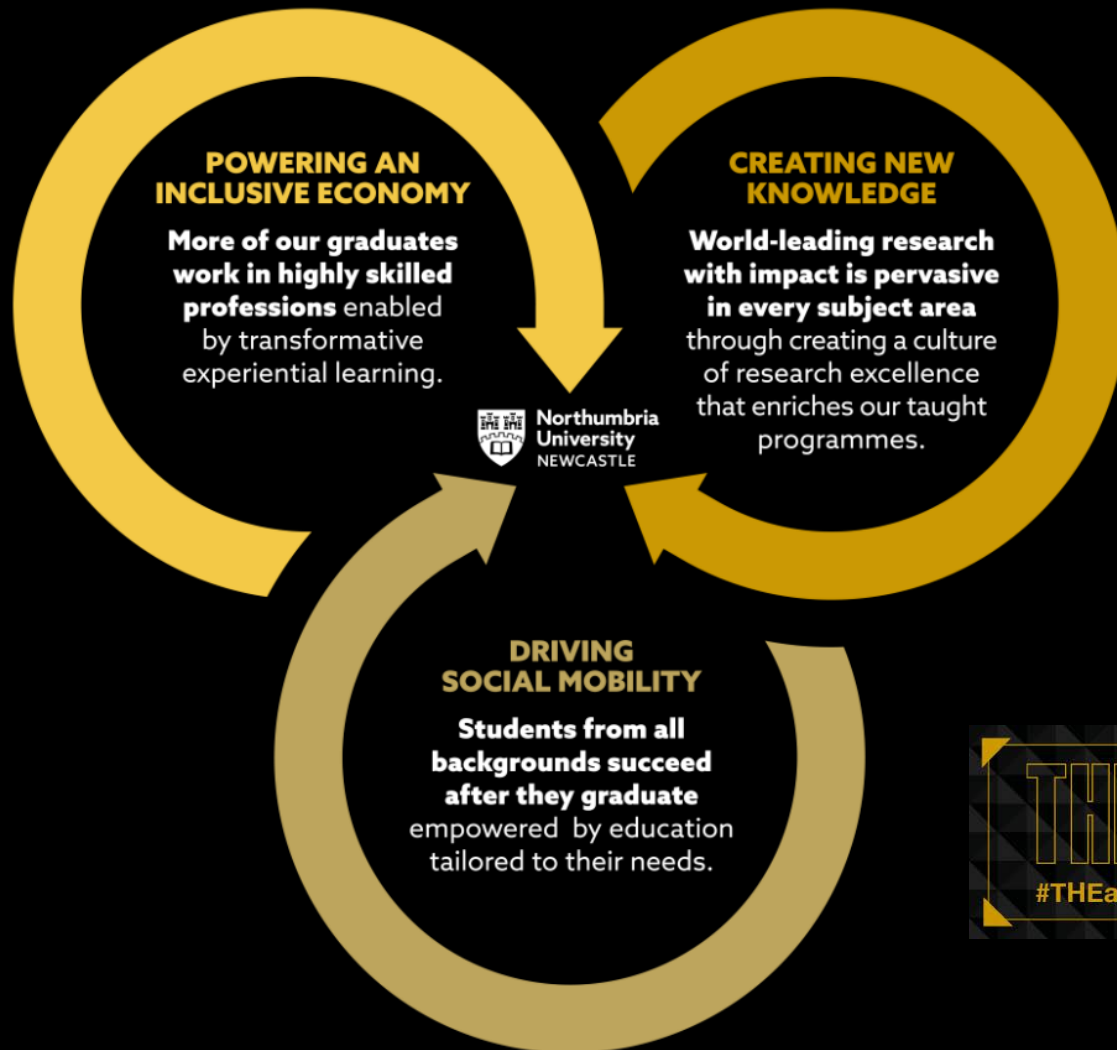
for Best Campus and Facilities

Student Crowd University Awards 2023



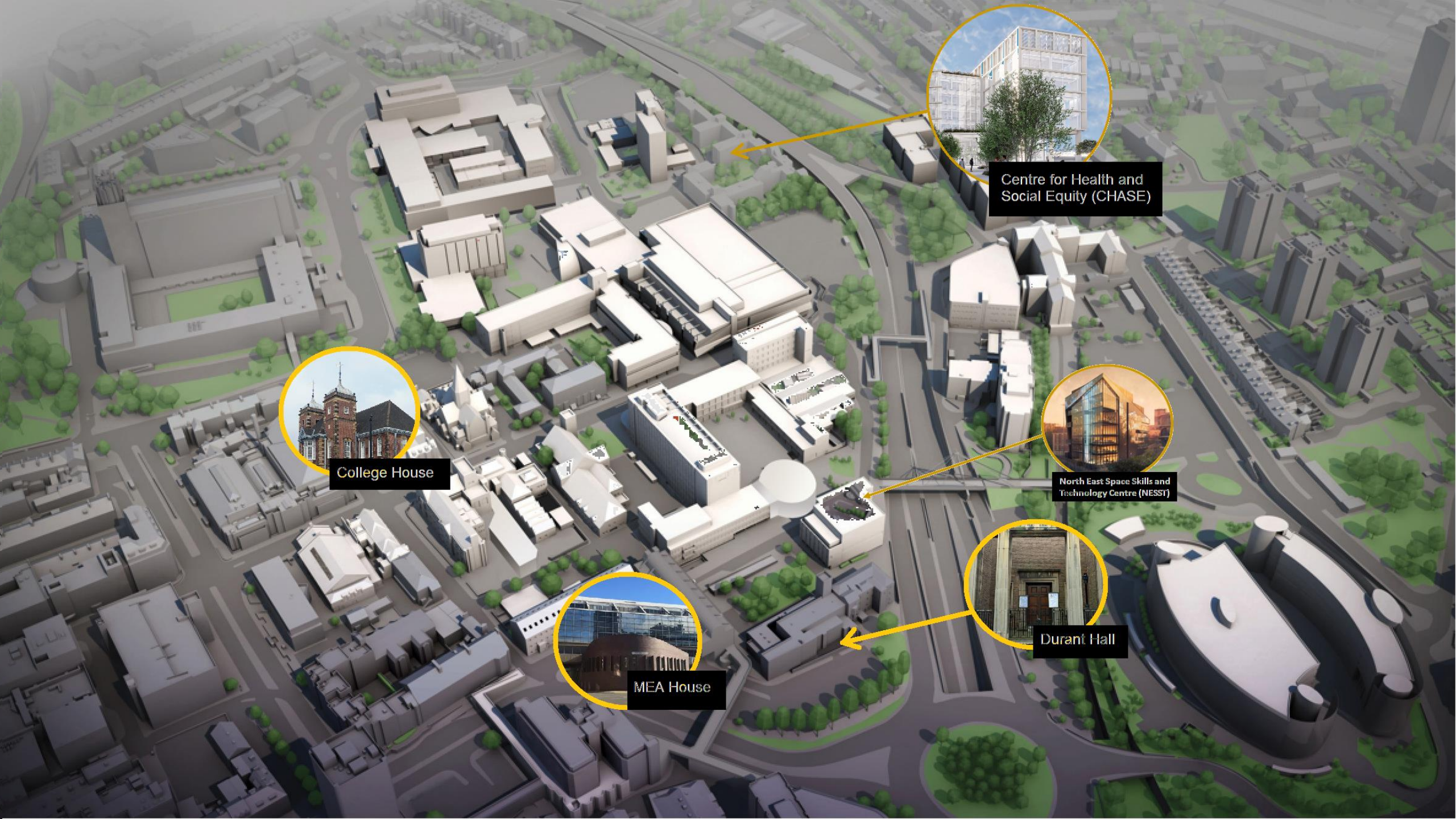
Northumbria University: Strategy 2024-30

A research-intensive university that unlocks potential for all



We are a global university that powers the North East economy, providing more highly skilled graduates than any other university.





Centre for Health and Social Equity (CHASE)



College House



North East Space Skills and Technology Centre (NESST)



MEA House



Durant Hall



**Northumbria
University**
NEWCASTLE

Our Vision for City Gateway East

An innovation quarter connecting world-leading research, innovation and education to the knowledge and skills needs of key industry sectors, enabling our communities to live, work and study in the city so they benefit from the impact of these ambitious collaborations.

Opportunities:

- **North East Space Skills and Technology Centre (NESST)**
- **Centre for Health and Social Equity (CHASE)**
- **Student Accommodation**
- **Co-Investment and Developments**
- **Pipeline of Talent in Industry**

Newcastle
City Council





North East Space Skills & Technology Centre (NESST)





NESST
NORTH EAST SPACE SKILLS
AND TECHNOLOGY CENTRE

**Northumbria
University
NEWCASTLE**

**INVESTING £50M
IN THE FUTURE
OF SPACE.**

IN PARTNERSHIP WITH.

LOCKHEED MARTIN

**UK SPACE
AGENCY**

**Funded by
UK Government**

UK NEWS WEBSITE OF THE YEAR

The Telegraph

News Sport Money Business Opinion Israel Ukraine Royals Life Style Travel Culture Puzzles

UK news Politics World Health Defence Science Education Environment Investigations Global Health Security

‘MIT in the North’: £50m space and tech centre announced at Northumbria University

Lockheed Martin and UK Space Agency will part-fund venture to design and build satellites and train space engineers

By Sarah Knapton, SCIENCE EDITOR

22 November 2023 • 2:00pm

Related Topics

Space, UK Space Agency, Northumbria University, Newcastle, Satellites

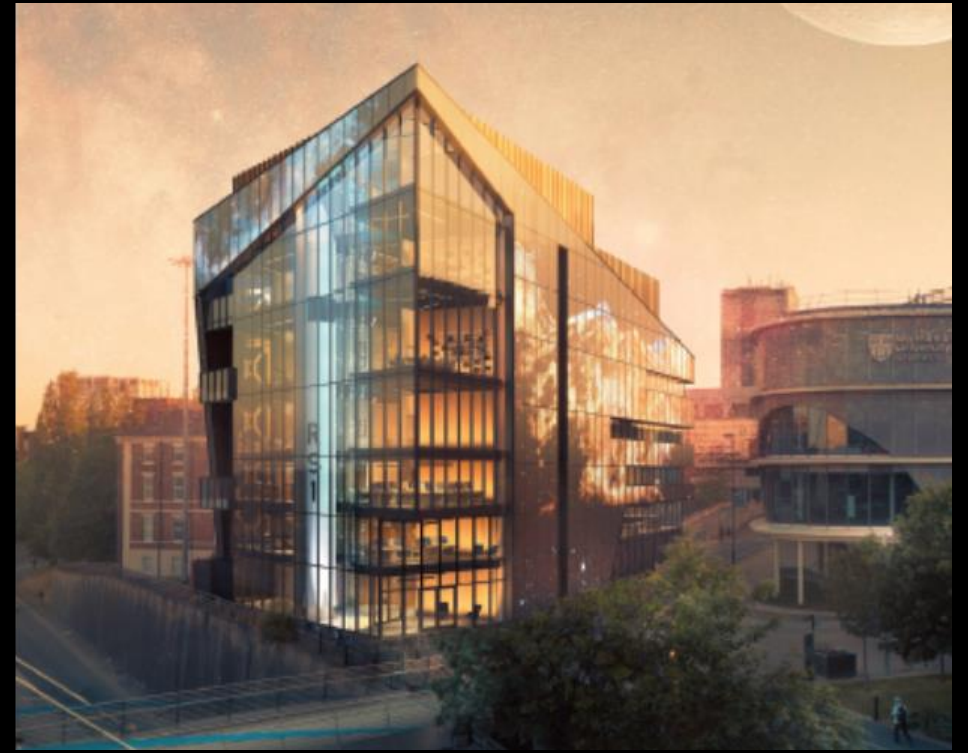


The centre is expected to lead the way in research in space weather, space-based solar power, optical communications, 3D-printed satellites and solar physics

A £50 million space and technology centre will be built at [Northumbria University](#) in an attempt to create an “MIT in the North”.

The American aerospace giant [Lockheed Martin](#) and the [UK Space Agency](#) are part-funding the venture, which will design and build satellites for launch and train the next generation of space engineers.

A suite of state-of-the-art research labs, classrooms and clean rooms – dubbed “the space station” – will be situated in [Newcastle city centre](#).



- **Research** and development facility, allowing technological development, testing and space certification.
- **Reskilling** and upskilling to meet the predicted shortfall in highly skilled workers needed by the sector.
- **Regeneration** of an area of inner-city Newcastle, supporting the levelling-up agenda.
- **Innovation** and business development, delivering growth in the regional and wider UK space economy.

NESST: Aims and rationale



- Anchor facility to catalyse development of the NE Space eco-system through industry & academic collaboration across the region
- Support National Space Strategy.
- Deliver a world leading research facility.
- Deliver R&D space & economic growth to support '*levelling-up*'.
- Deliver infrastructure for collaboration with DSTL, Catapult, other industry and wider international space research organisations
- Deliver professional development and university degrees to train the future UK space economy workforce.
- Deliver STEM engagement activities.
- Magnet to grow space manufacturing in the northeast with linked supply chain R&D and employment.

Centre for Health and Social Equity (CHASE)

Address health and social inequality through education, and research, driving policy change

Provide solutions for the NHS workforce crisis

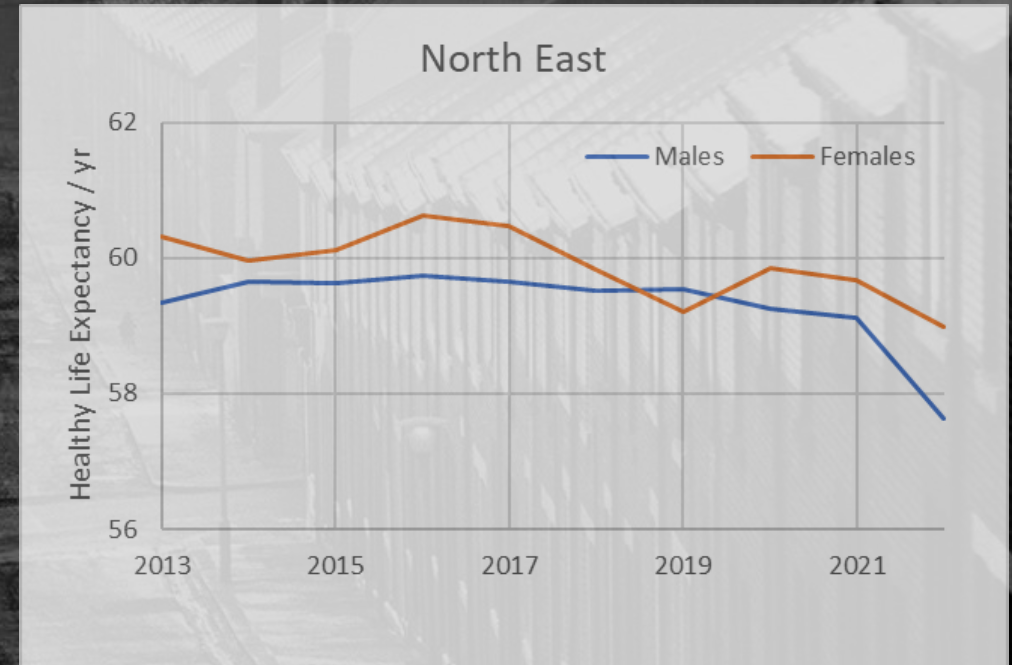
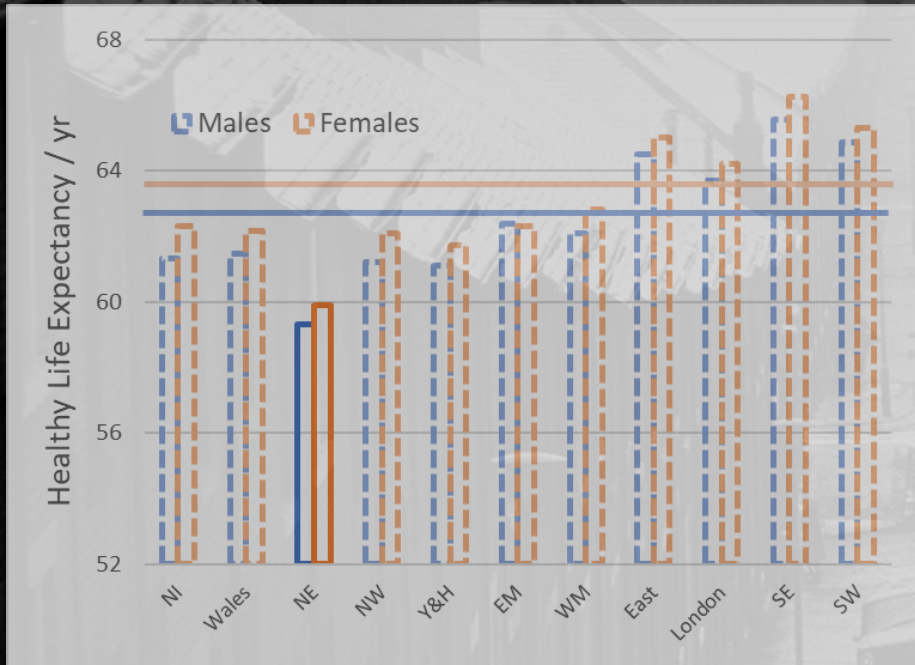
Co-location, capital investment, development partners and research collaboration

Northumbria currently has:

- Over **5,700** students in nursing, midwifery, allied health professions, social work.
- Over **700** allied health professionals to the NHS, social care and other providers each year
- The largest Nursing and Midwifery Council Test of Competence Centre in the UK – accrediting international nurses to work in the UK
- **100%** of students moving on to skilled employment or further study



The Issues: Health Inequalities



Ten-year average figures

Health state life expectancies in England, Northern Ireland and Wales: between 2011 to 2013 and 2020 to 2022

CHASE Activity



**Northumbria
University**
NEWCASTLE



North View



**Northumbria
University**
NEWCASTLE

The north elevation of CHASE at the lower levels is mostly the service areas of the building. The stairwell of the primary core is expressed as a vertical element. The External Plant Compound (EPC) is visible on this approach in addition to the land preserved for meanwhile use and future developments.



Net Zero 2040

PV, LEDs, ASHPs ... cladding



**Northumbria
University**
NEWCASTLE





Northumbria
University
NEWCASTLE

Student Accommodation



2/3
of our students live
in city centre



1000
Student Beds
By 2030



£104.7m
GVA Student Spending –
Newcastle
2021/22



6.5%
Forecast increase in
students
by 2027/28

- Additional 1000 student beds by 2030
- Several potential development sites
- Range of student accommodation options at different price points
- Increased demand for serviced accommodation





**Northumbria
University**
NEWCASTLE

Conclusion

Northumbria University has development plans aligned with its Strategy and emerging Estates Masterplan that will:

- Transform its campus and part of the city;
- Bring investment, employment and social value to the city;
- Bring existing staff and students to the city centre and attract more talent as our plans develop.